



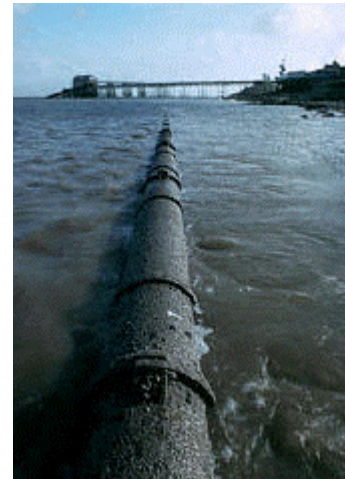
Emissions and Effluent Management

Quantum's FacTS™ software offers a comprehensive, integrated, flexible information management system for environmental, health and safety professionals. The Emissions and Effluent Management feature of the Environmental Reporting Suite offers a framework for estimating air and water emissions, preparing permits and providing input for the preparation of SARA 313 Reports.

The FacTS Emissions and Effluent Management feature provides a powerful tool for ensuring compliance with Title IV, Title V, other Clean Air Act Regulations, and Clean Water Act. FacTS generates worksheets for National Pollutant Discharge Elimination System (NPDES) and Publicly Owned Treatment Works (POTW) reports along with Greenhouse Gases (GHG), Hazardous Air Pollutants (HAPS), Volatile Organic Compounds (VOC), Carbon Emissions audit and monitoring, along with state Air Inventory Reports. It can also be used to run "What If" scenarios so environmental impacts can be reviewed before production or process changes are made, or permits renewed.

This feature, through its integration with other features such as **Permit Tracking**, **Chemical Inventory Tracking**, and **Sample Tracking**, provides for:

- Defining an emissions source inventory;
- Preparing and tracking permits;
- Collecting and assessing operating and analytical data;
- Monitoring day to day compliance with Title V operating permits;
- Generating government required reports;
- Determining target areas for emissions reduction; and
- Interfacing to CEMS.



QUALITY ENHANCING

Emissions and Effluent Management, an integrated feature of FacTS, provides a seamless system that avoids redundant data entry while helping prepare and monitor required operating permits. Designed to give you tools to better assess potential release violations, the system provides a framework to track emissions, prepare permits, and monitor compliance.

EFFICIENT & COST EFFECTIVE

Now with one integrated system you can:

- Use AP-42 equations, or create custom equations to more accurately reflect current scenarios;
- Define where emissions are dispersed from an emissions source to emission points;
- Track the various sources at a given Facility that may emit pollutants into the atmosphere;



- Estimate both expected and potential emissions for the various sources at the facility;
- Track workplace conditions (temperature, pressure, etc.) during equipment readings;
- Stay informed by system generated calendar and warning messages;
- Rely on the system to automatically check standards and limits, and to determine which messages and advisories should be distributed; and
- Use an equation to determine the destruction efficiency for more complex processes.

INTEGRATED

FACTS also manages other information related to employee medical and training records, illness and injury reporting, respirator programs, work permits, hazard communication standards, process safety management, and much more.

The Emissions and Effluent Management feature has full ties to information throughout key areas of FACTS, including:

- MSDS Information
- Permit Information
- Chemical Lists
- Material Usage Data
- Analytical Data

These ties allow this feature to reuse data already entered to produce Air and Water reports, and ensure consistency of data and results across reports. So water discharge quantities used for the NPDES reports, are the same data used for the TRI reports; and equipments readings used for the HAPS reports are the same data used for the Annual Air Inventory report.

