

Sample Tracking

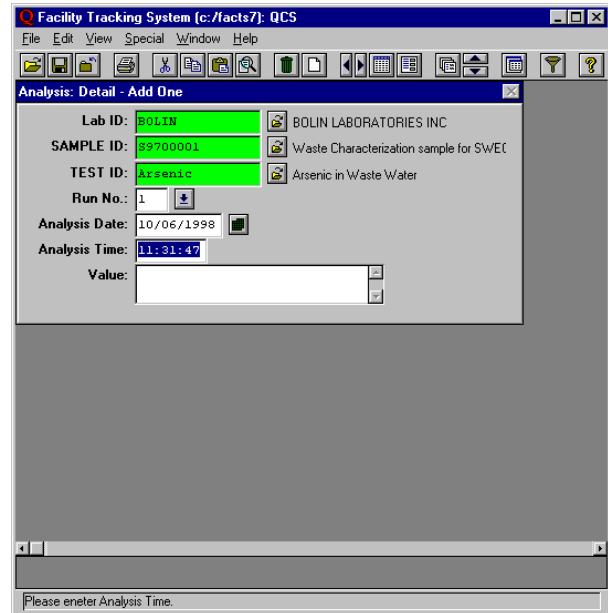
Quantum's FacTS software offers a comprehensive, integrated, flexible information management system for health and safety professionals. The FacTS *Sample Tracking Module* offers a framework for data entry, tracking, and result analysis of air and water emissions samples.

The Facility Tracking System (FacTS™) Sample Tracking Module allows the user to track an unlimited number and type of samples in the work place, including air monitoring, water discharge, waste analysis, water monitoring, and operational data samples. Samples can be directly linked to any employee, location, work zone, or individual piece of equipment within the system.

In FacTS, the sample log is used to define the types and list of analyses to be associated with the sample. As the user defines the test series, she is prompted for additional information regarding the type of tests to be performed and the measurement units associated with each test. Chain of custody functions are available to track and confirm the receipt of samples. FacTS supports the direct entry of analytical results. With the purchase of the Data Builder Module, sample results can be electronically uploaded.

This module, through its integration with other FacTS modules such as Emissions and Effluent Management and Chemical Inventory Tracking, provides for:

- Collecting and assessing operating and analytical data
- Monitoring day to day compliance with Title V operating permits
- Generating government required reports



Enhances Productivity

Through its integration with FacTS, the Sample Tracking module provides a seamless information management system that avoids redundant data entry while aiding in preparation and monitoring of required operating permits.

Designed to give you tools to better assess sample analysis procedures, the system provides a framework to track samples, prepare permits, and monitor compliance.





Integrated

FacTS also manages other information including employee medical and training records, illness and injury reporting, respirator programs, work permits, Hazard Communication standards, and process safety management. The Sample Tracking module has full ties to MSDS, Permit, Air Emissions, and Waste Stream Information in FacTS.

Easy to Use

The FacTS menu driven Graphical User Interface minimizes data entry and information retrieval time. Features such as the tool bar, accelerator keys, toggle boxes, and radio buttons simplify data entry and retrieval.

On-line context-sensitive web style help is standard. User-definable program level security eliminates costly errors brought on by unauthorized access or data entry. FacTS incorporates reference links to scanned documents and externally stored text files, easing data retrieval and saving time.

Comprehensive

Now with one integrated system you can:

- Link sample data to outfalls, stacks and emission points, waste streams, products and materials.
- Identify and track samples throughout the analysis cycle.
- Track the various sources that may emit pollutants at a given facility.
- Calculate both in range and out of range emissions for the various sources at the facility.
- Rely on the system to automatically check standards and limits, and to determine which messages and advisories should be distributed.
- Generate custom reports.
- The Sample Tracking module is also linked to the Industrial Hygiene Module, allowing for the storage of work place sampling, radiation monitoring, noise and sound level surveys